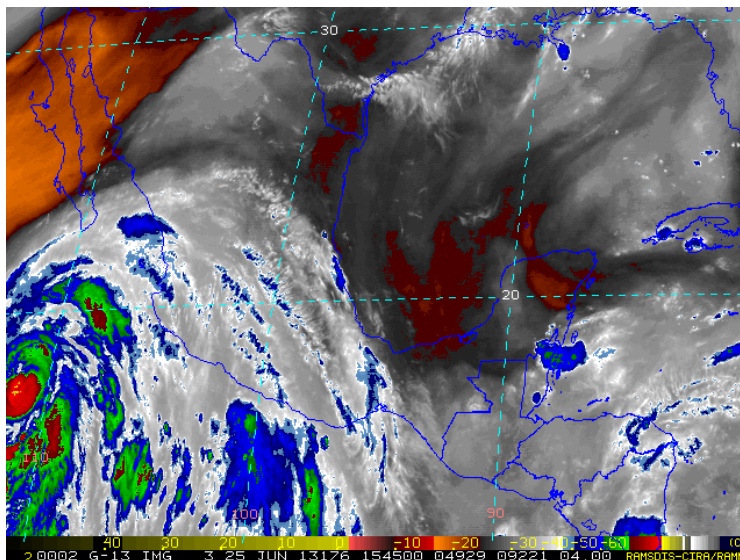
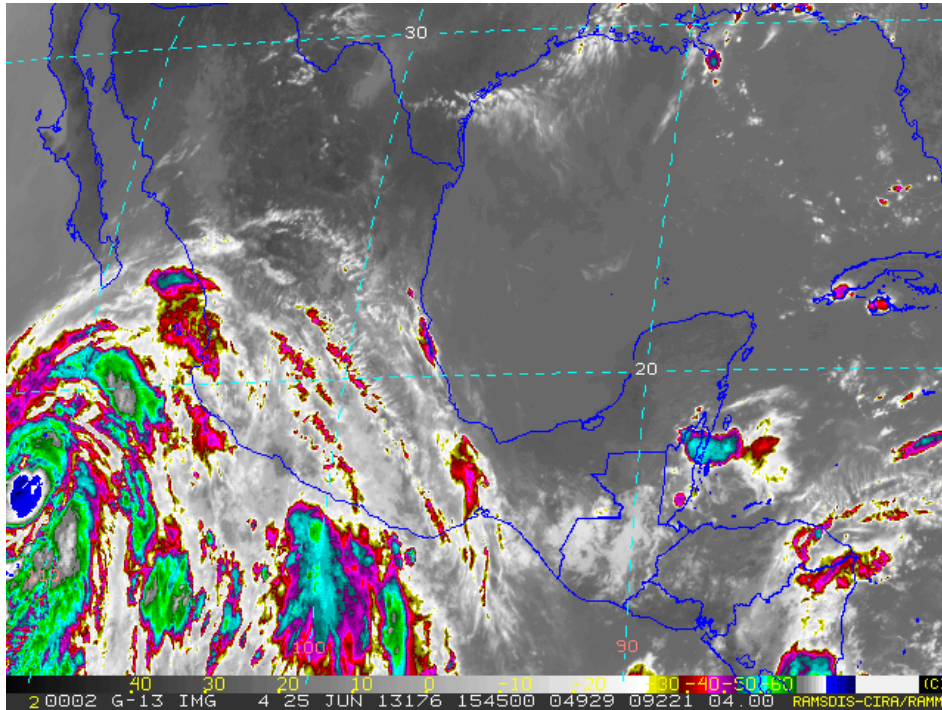


WEEKLY OUTLOOK

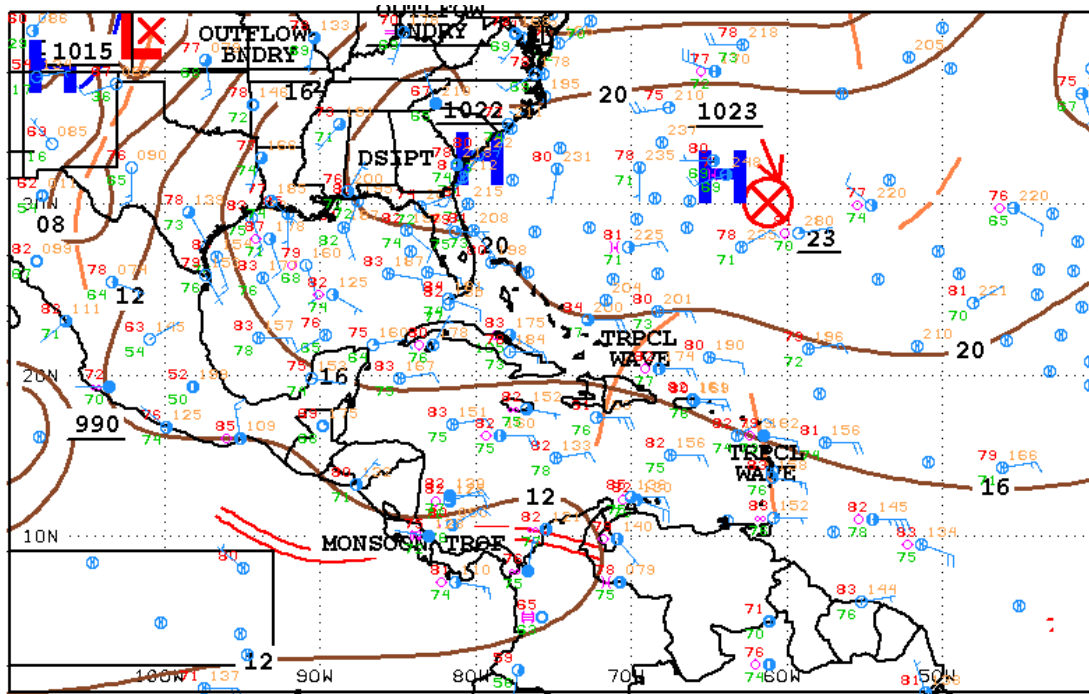
Valid: June 24-July 1, 2013

Issue: 6:00 am Tuesday, June 24, 2013

SYNOPSIS for 6:00am Tuesday, June 24, 2013 RESIDUAL INSTABILITY IN THE MOIST EASTERLY AIRFLOW INDUCED BY A SHORT-WAVE TROUGH IN THE UPPER LEVELS IS PRODUCING LOCALIZED MODERATE SHOWERS OVER NORTHERN COASTAL WATERS AND IN THE SOUTH OF BELIZE THIS MORNING. A WEAK SURFACE RIDGE WILL CONTINUE TO PERSIST OVER THE NW CARIBBEAN, SUPPRESSING WIDESPREAD SHOWER ACTIVITY ACROSS BELIZE THIS WORKING WEEK. THE APPROACH AND PASSAGE OF A TROPICAL WAVE ON FRIDAY AND SATURDAY WILL FAVOR AN INCREASE IN SHOWERS OVER THE COUNTRY THIS WEEKEND THROUGH MONDAY, ESPECIALLY ALONG THE COASTAL ZONE AND OVER SOUTHERN DISTRICTS.



GOES satellite IR and Water Vapor images for 9:00 am Tuesday, June 25, 2013, showing cold, deep convection over northern coastal area of Belize, with a weaker cluster of convection over northern Toledo district this morning.



12Z SOUTHWEST NORTH ATLANTIC SFC ANALYSIS
 ISSUED: Tue Jun 25 14:44:36 UTC 2013

NATIONAL HURRICANE CENTER
 MIAMI, FLORIDA
 BY TAFB ANALYST: CW
 COLLABORATING CENTERS: NHC OPC WPC

Figure 1a. NHC Surface Weather Map for 9:00 am, Tuesday, June 25, 2013, showing location a tropical wave over Hispaniola and a second tropical wave crossing the Lesser Antilles. Both tropical waves are moving W- NW at 10-15 mph.

TROPICAL WEATHER SCENARIO: A 1023 MB WEST-ATLANTIC HIGH CENTERED NEAR 30N60W HAS A RIDGE OF HIGH PRESSURE EXTENDING SW ACROSS THE NORTH-WESTERN CARIBBEAN, PUTTING A WEAK LID ON ORGANIZED CONVECTIVE ACTIVITY OVER THE WESTERN CARIBBEAN AND BELIZE. HOWEVER, A TRANSIENT UPPER LEVEL TROUGH IN THE SE GULF OF MEXICO EXTENDING INTO THE EXTREME NW CARIBBEAN IS SUPPORTING SOME LOCALIZED SHOWERS TODAY. TWO TROPICAL WAVES IN THE CARIBBEAN THIS MORNING ARE HEADING WESTWARDS AT 10-15 MPH. THE FIRST OF THESE WAVES WILL REACH THE NW CARIBBEAN AND BELIZE BY FRIDAY AND THE SECOND BY TUESDAY MORNING OF NEXT WEEK. THE APPROACH AND PASSAGE OF THE FIRST TROPICAL WAVE WILL FAVOR INCREASING SHOWERS OVER NORTHERN CENTRAL AMERICA AND BELIZE THIS WEEKEND THROUGH MONDAY.

OUTLOOK: THE GFS FORECAST MODEL INITIATED AT MIDNIGHT LASTNIGHT AND RUNNING THROUGH THE NEXT24-144-HR IS RESOLVING LESS RAINFALL ACTIVITY OVER BELIZE THIS WORKING WEEK, BUT INCREASES THE RAINFALL ACTIVITY THIS FRIDAY THROUGH MONDAY OF NEXT WEEK. THE GLOBAL TROPICS HAZARDS AND BENEFITS OUTLOOK (SEE BELOW) IS PROJECTING THE POTENTIAL FOR HEAVY RAINS OVER CENTRAL AMERICA AND SOUTHERN MEXICO FOR THE PERIOD JUNE 26- JULY 02, 2013, IN ASSOCIATION WITH THE CONVECTIVELY ACTIVE PHASE OF THE MJO MOVING THROUGH THE WESTERN HEMISPHERE DURING THIS PERIOD.

DAILY RAINFALL AMOUNTS OF 0.10-0.25 OF-AN-INCH ARE PROJECTED OVER MOST DISTRICTS DURING THE REST OF THIS WEEK THROUGH THURSDAY, WITH LOCALLY HIGHER RATES OF 0.50-0.75 OF-AN-INCH OVER NORTHERN AND CENTRAL COASTAL AREAS. FRIDAY THROUGH MONDAY WILL SEE INCREASING SHOWER ACTIVITY, ESPECIALLY OVER THE COAST AND SOUTHERN DISTRICTS. DAILY RAINFALL ACCUMULATIONS WILL BE RANGING FROM 0.50-1.25 INCH OVER THESE AREAS, WITH LOWER RATES OF 0.25-0.50 OF-AN-INCH ELSEWHERE OVER THE COUNTRY. EXPECT HIGHER DAILY AMOUNTS IN THE ORDER OF 1.50-2.50 INCHES IN THE EXPOSED ELEVATED TERRAIN OF THE CAYO, STANN CREEK AND TOLEDO DISTRICTS.

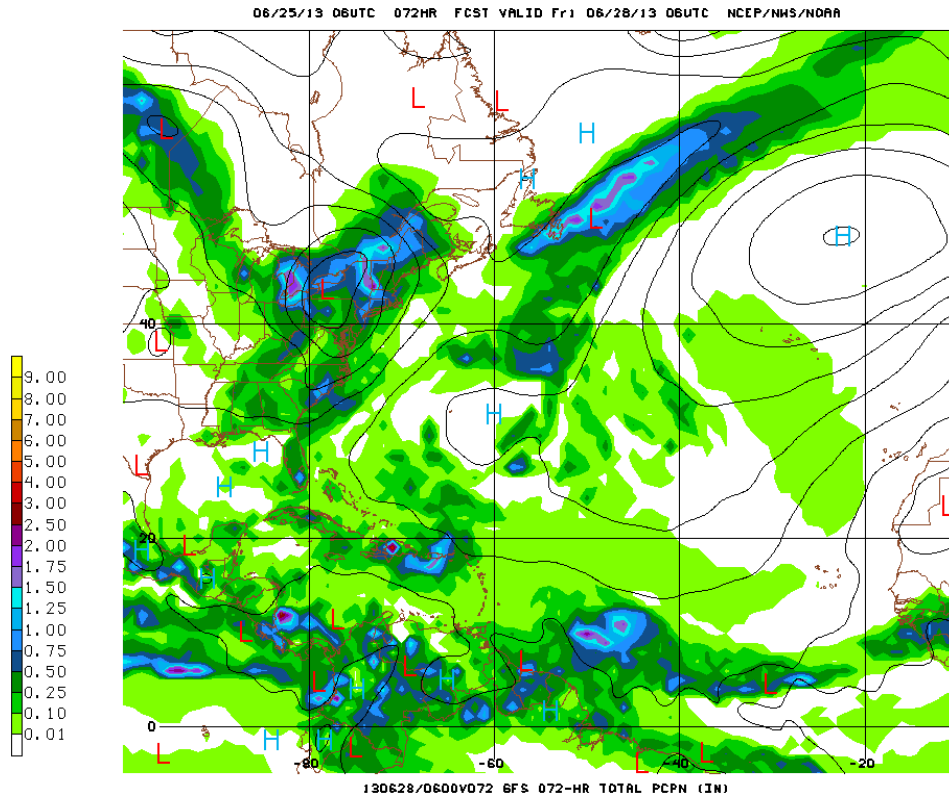


Figure 1 b. National Centre for Environmental Prediction (NCEP) GFS model 72-hour forecast precipitation map valid for period ending 12:00 am Friday, June 28, 2013, showing 24-hr rainfall accumulation in the range of 0.10 – 0.25 of-an-inch over coastal Belize.

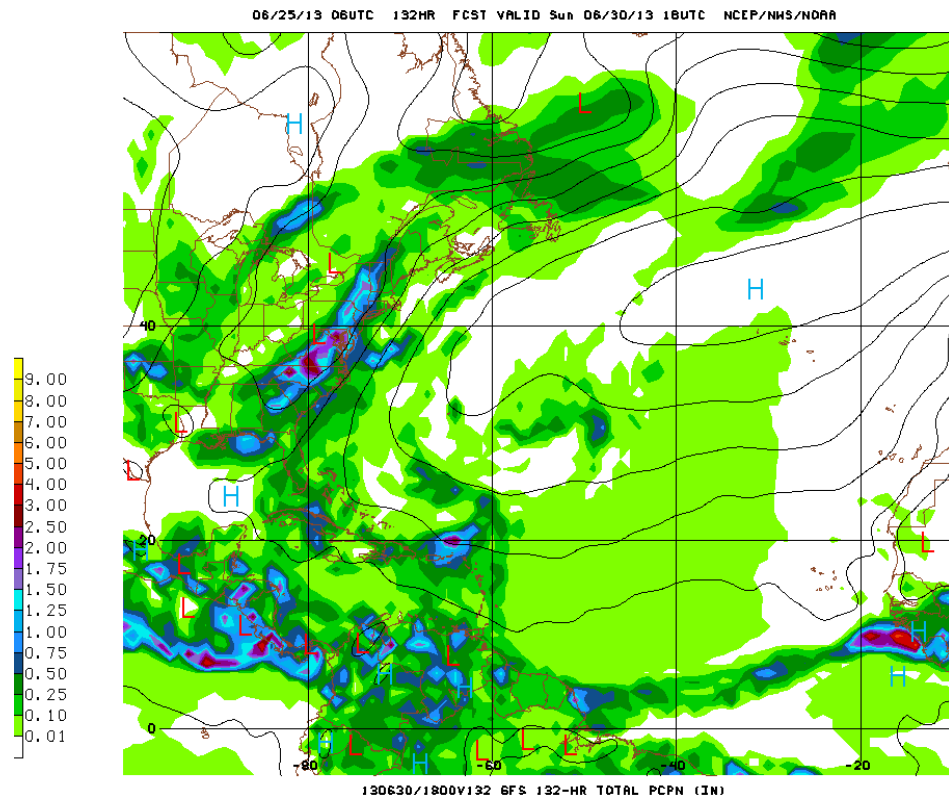


Figure 1 c. National Centre for Environmental Prediction (NCEP) GFS model 132-hour forecast precipitation map valid for period ending 12:00 pm Sunday, June 30, 2013, showing persistent 24-hr rainfall accumulation of 0.75-1.00 inch per day over central and northern coastal Belize.

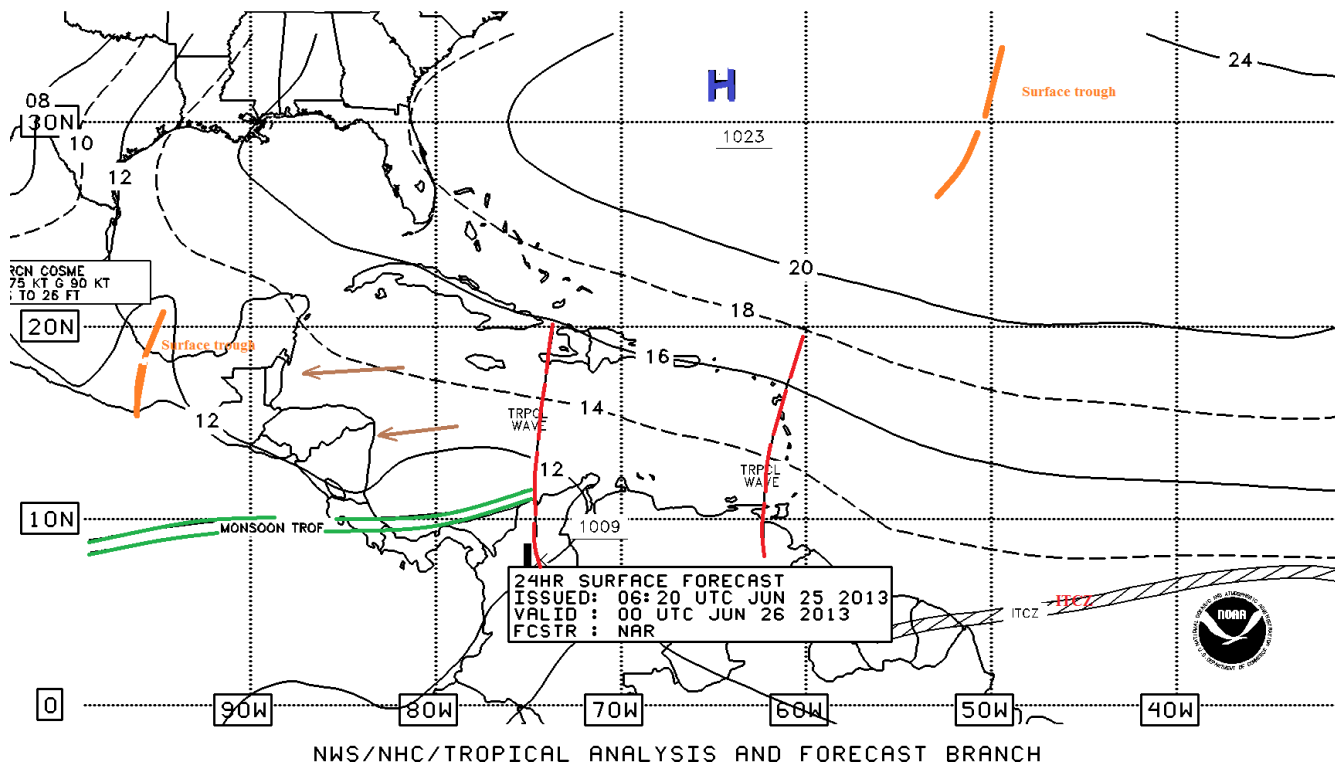


Figure 2. NHC 24-hour forecast surface weather map, valid for 6: 00 pm Tuesday, June 25, 2013, showing the two tropical waves in the Caribbean heading westward at 10-15 mph. The first tropical wave will reach Belize during Friday.

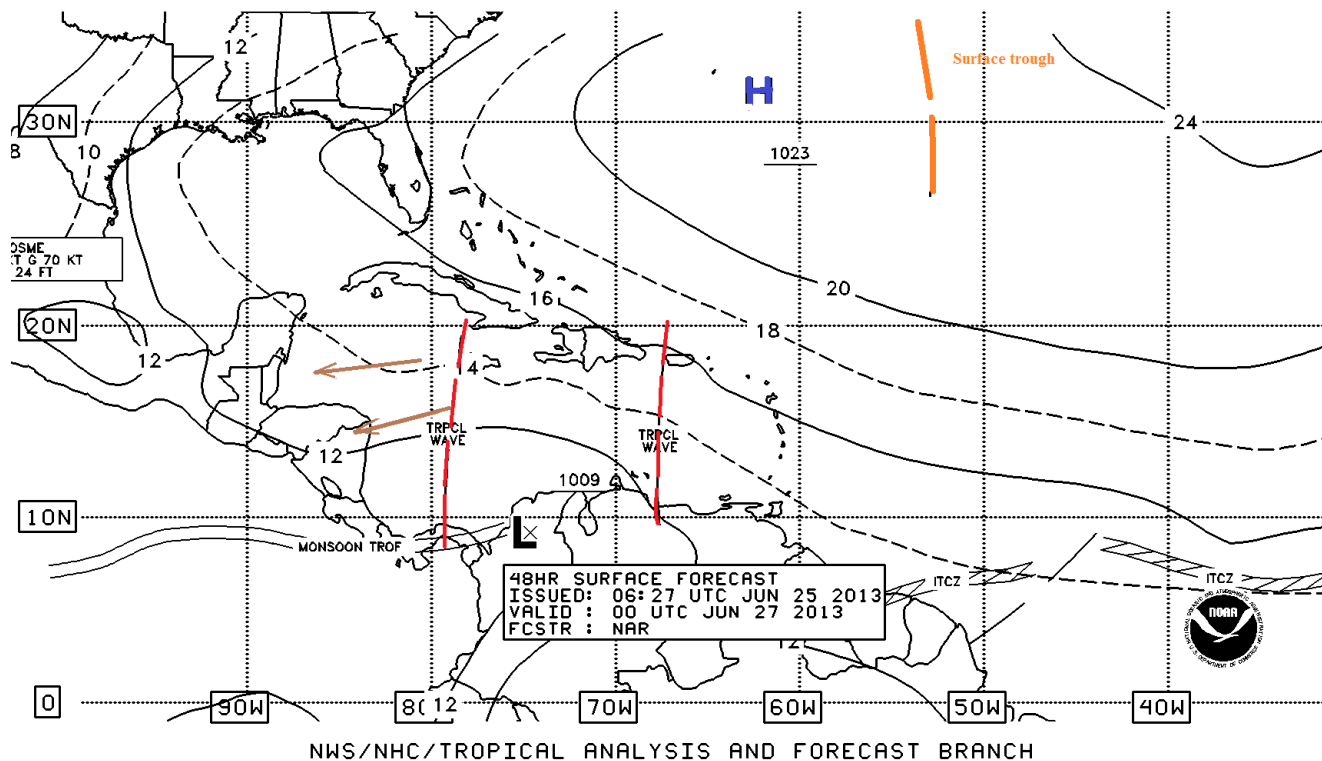


Figure 3. NHC 48-hour forecast surface weather map, valid for 6: 00 pm, Wednesday, June 26, 2013, showing tropical waves moving across the Caribbean. The first is making its entry into the western Caribbean and the second approaching the Dominican Republic.

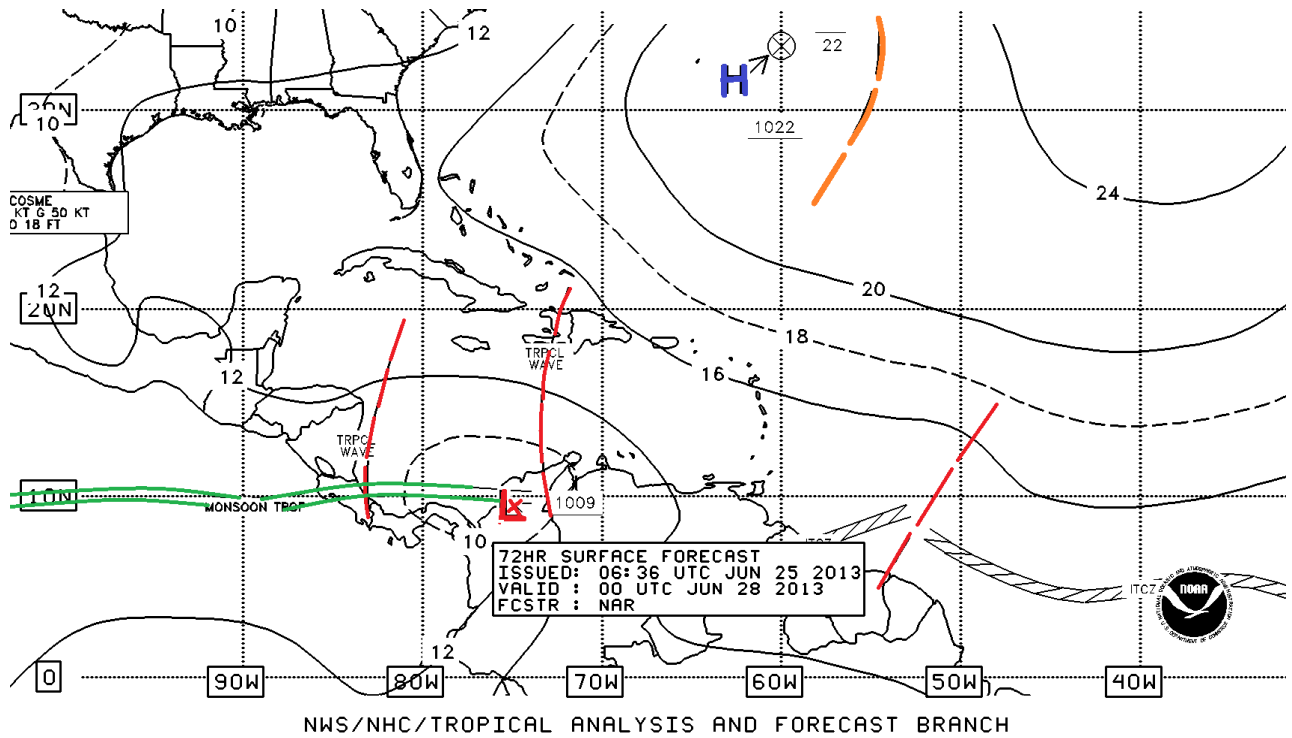


Figure 4. NHC 72-hour forecast surface weather map, valid for 6: 00 pm Thursday, June 27, 2013, showing tropical wave reaching the coast of Nicaragua. The tropical wave will induce an increase in showers over southern Belize on Friday.

TROPICAL WEATHER OUTLOOK

Graphical Tropical Weather Outlook

National Hurricane Center Miami, Florida

800 AM EDT TUE JUN 25 2013 Satellite Image: 0652 AM EDT

Outlined areas denote current position of systems discussed in the Tropical Weather Outlook. Color indicates probability of tropical cyclone formation within 48 hours.

 Low <30%	 Medium 30-50%	 High >50%
---	--	---

CZC MIATWOAT ALL
TTAA00 KNHC DDHMM

TROPICAL WEATHER OUTLOOK
NWS NATIONAL HURRICANE CENTER MIAMI FL
800 AM EDT TUE JUN 25 2013

FOR THE NORTH ATLANTIC...CARIBBEAN SEA AND
THE GULF OF MEXICO...

TROPICAL CYCLONE FORMATION IS NOT EXPECTED
DURING THE NEXT 48 HOURS.

FORECASTER LANDSEA

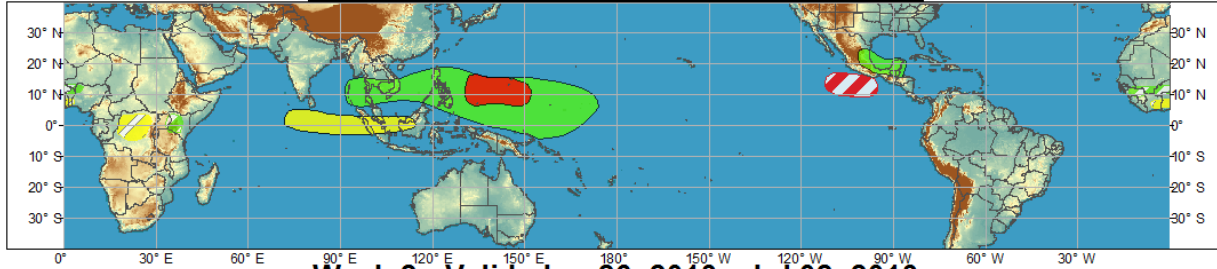
[Go to Eastern Pacific Outlook](#)



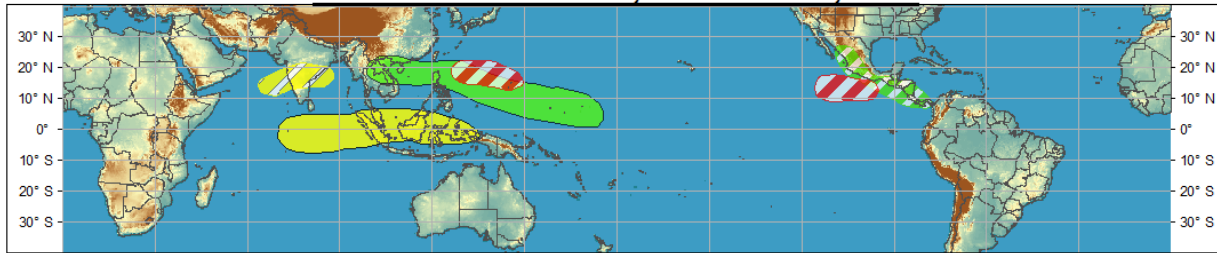
Global Tropics Hazards and Benefits Outlook - Climate Prediction Center



Week 1 - Valid: Jun 19, 2013 - Jun 25, 2013



Week 2 - Valid: Jun 26, 2013 - Jul 02, 2013



Produced: 06/18/2013

Forecaster: Rosencrans

Confidence		
High	Moderate	
		Tropical Cyclone Formation Development of a tropical cyclone that eventually reaches tropical storm/cyclone strength.
		Above-average rainfall Weekly total rainfall in the upper third of the historical range.
		Below-average rainfall Weekly total rainfall in the lower third of the historical range.
		Above-normal temperatures 7-day mean temperatures in the upper third of the historical range.
		Below-normal temperatures 7-day mean temperatures in the lower third of the historical range.

Product is updated once per week. The product targets broad scale conditions integrated over a 7-day period for US interests only. Consult your local responsible forecast agency.



中央氣象局
Central Weather Bureau



UNIVERSITY AT ALBANY
State University of New York



The Week-1 outlook is based on variability associated with the MJO (composites and dynamical model outputs) and on-going tropical cyclone activity. The outlook calls for an increased threat of above-average rainfall from Southeast Asia to the western North Pacific (related to the MJO), and across Mexico (tropical cyclone activity). Below-average rainfall is likely over the eastern Indian Ocean and western Maritime Continent, as well as over central Africa. A northward displacement of the West African Monsoon rains is also likely, resulting in a dry area along the coast.

The Week-2 outlook is based largely on the forecast MJO state, with the convectively active phase moving into the Western Hemisphere. This increases the potential for heavy rains across Central America and Mexico, with some residual activity across the Western Pacific. Dry conditions are likely to expand over India, the Indian Ocean, and the Maritime Continent.

RFrutos
Meteorologist/Hydrologist
June 25, 2013