

WEEKLY WEATHER OUTLOOK BELIZE, CENTRAL AMERICA

PERIOD: Monday-Monday, Nov. 19-26, 2012

DATE ISSUED: Sunday, Nov. 18, 2012 – 6:00 pm

RFrutos

SYNOPSIS: A high pressure ridge over the Gulf of Mexico and the NW Caribbean will keep a mild and stable northerly airflow over Belize today through Monday. A surge of cool air from the continental USA will energize the high pressure system in the Gulf of Mexico during the next 48 hours. This will favor the mild conditions to persist during most of this week.

The forecast model is picking up a surface trof in the southeastern Gulf of Mexico and the extreme NW Caribbean. This trof will drift SW over Yucatan and Belize by late Tuesday, pulling in some moisture and showers over central and northern Belize by Tuesday evening and early Wednesday. Some of these showers will drift inland on Wednesday.

Otherwise, showers will be confined mostly to the sea and some areas of the central and northern coastal region during the working week.

No tropical cyclone is expected to form over or move into the Caribbean region during the next five to seven days.

Rainfall rates over the sea and coastal regions of Belize will be ranging from 0.10-0.25 of-an-inch Monday through Friday in light to moderate showers and periods of rain. Late Tuesday and Wednesday will be the period for the highest probability of rainfall especially along the central and northern areas of the mainland and coastal regions.

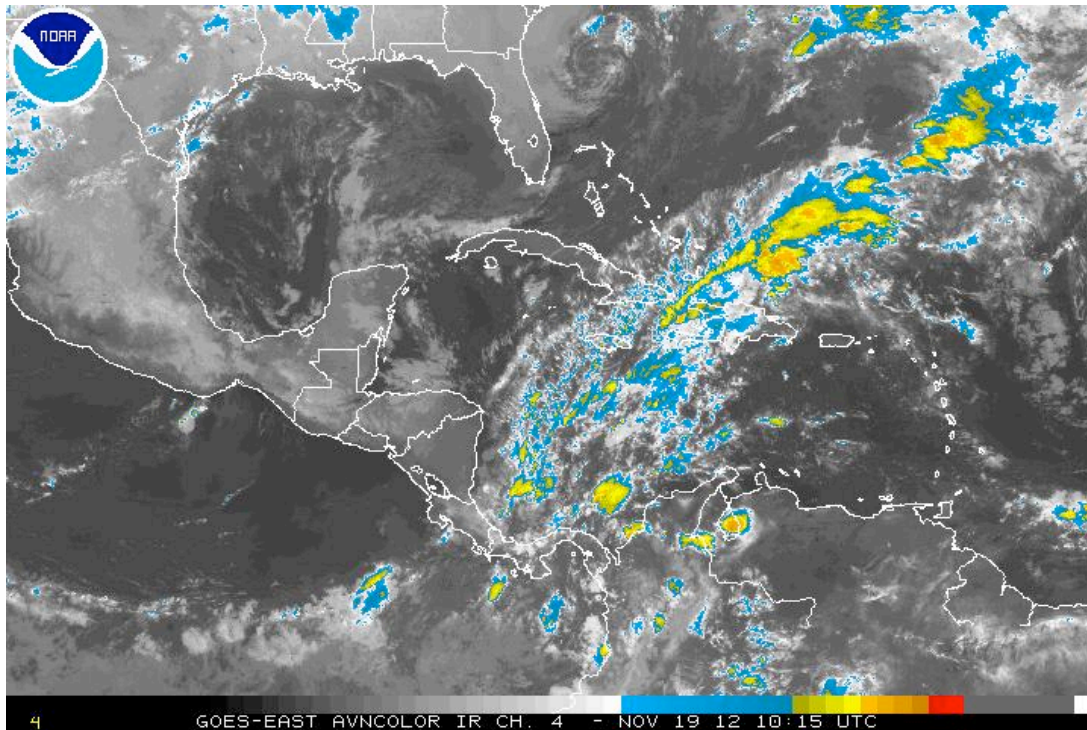


Figure 1 GOES 13 IR Satellite picture for 6:15 pm, Sunday, Nov. 18, 2012, showing shallow, layered cloud over and offshore northern Belize. Deeper and more vigorous convection evident over the SW and central Caribbean.

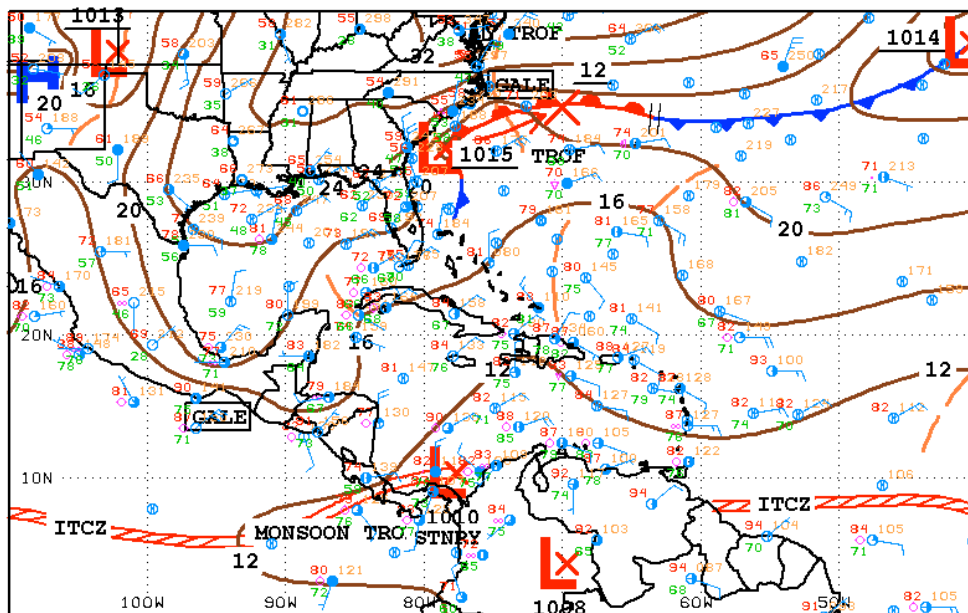


Figure 2 NHC surface isobaric map valid for 3:00 pm Sunday, Nov. 18, 2012, showing high pressure ridge extending southwards from the Mississippi valley across the Gulf of Mexico into Yucatan and Belize. Surface trof in the central Caribbean, generating widespread convection in that area.



18Z SOUTHWEST NORTH ATLANTIC SFC ANALYSIS
 ISSUED:
 Sun Nov 18 20:36:42 UTC 2012

NATIONAL HURRICANE CENTER
 MIAMI, FLORIDA
 BY TAFB ANALYST: MF/CW
 COLLABORATING CENTERS: NHC OPC HPC

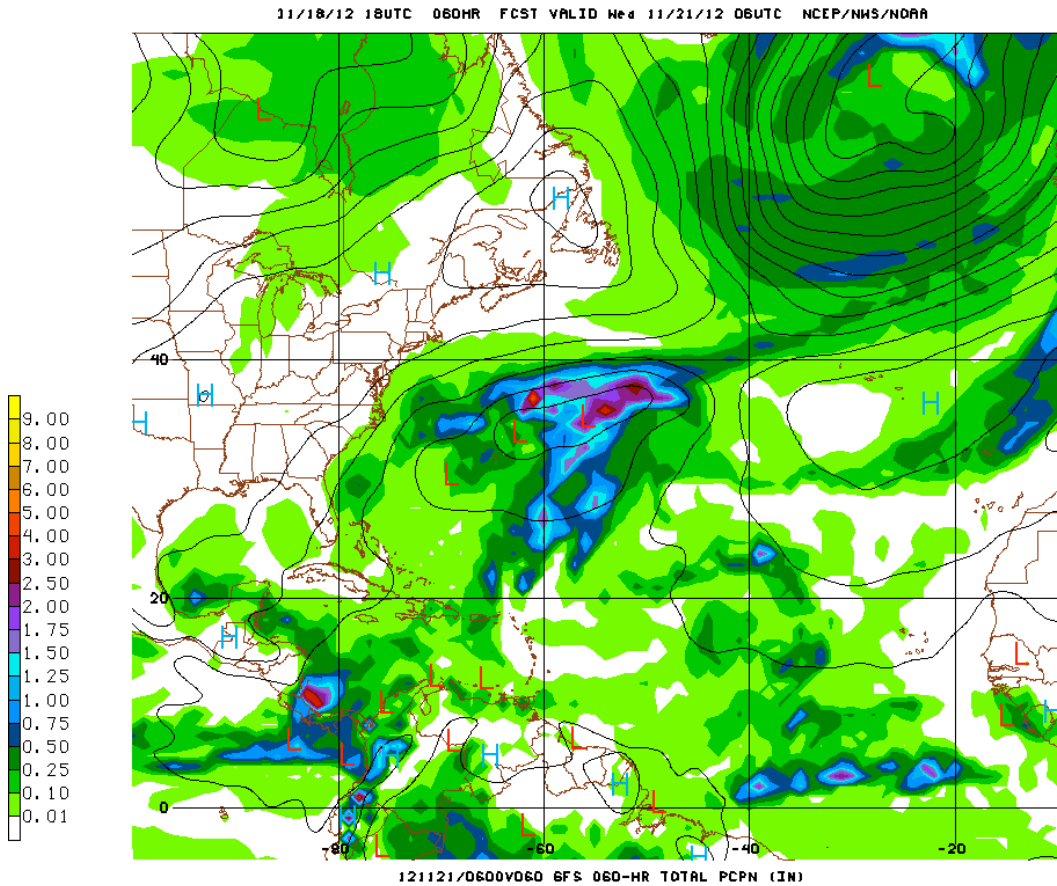


Figure 3 GFS-model 60 hr rainfall projections valid for 12:00 am, Wednesday, Nov. 21, 2012, showing 24-hour rainfall accumulations of 0.10 to 0.25 of-an-inch over north-eastern coastal areas.

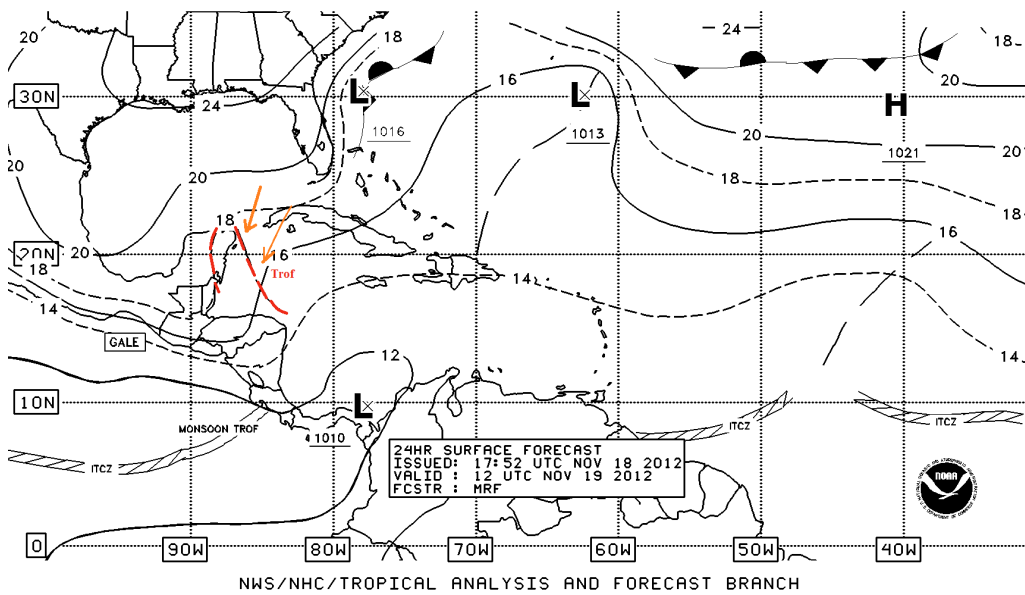


Figure 4 NHC 24-hr forecast surface map, valid for 12:00 am Monday, Nov. 19, 2012, showing surface trofs in the NW Caribbean near northern Belize. The trofs are associated with a surge in the Northerly flow as the high pressure ridge in the Gulf of Mexico builds southwards.

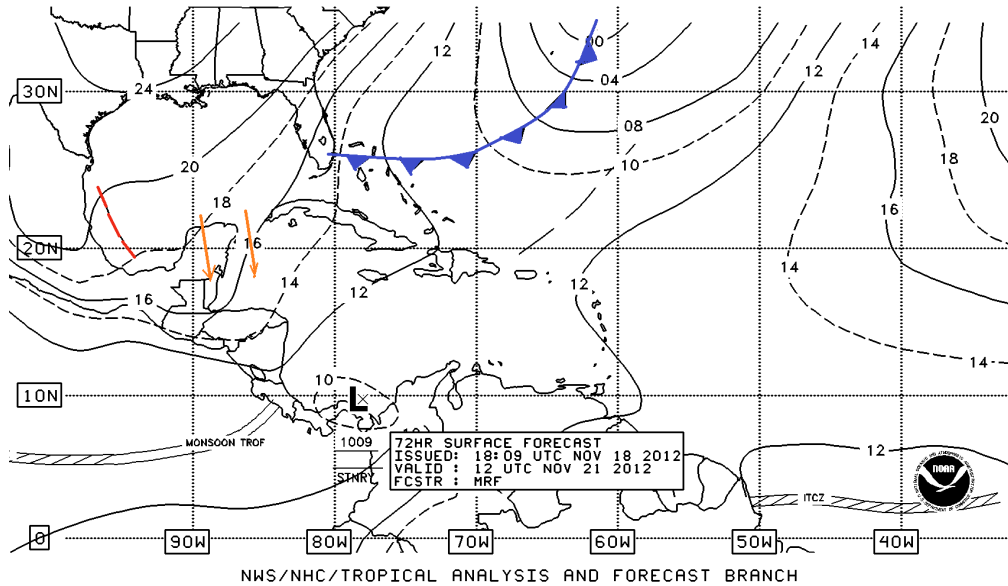


Figure 5 NHC 72-hr forecast surface map, valid for 6:00 am Wednesday, Nov. 21, 2012, showing high persisting in the Gulf of Mexico and the NW Caribbean, generating a cool and stable Northerly airflow.

Belize Seven-day Outlook for Agriculture and Industry...

Sun	Mon	Tue	Wed	Thu	Fri	Sat
Nov. 11, 2012	Nov. 12, 2012	Nov. 13, 2012	Nov. 14, 2012	Nov. 15, 2012	Nov. 16, 2012	Nov. 17, 2012
Mostly sunny and mild. Little or no rainfall	Mostly sunny and mild. Little or no rainfall	Cloudy spells. Showers and light rain, spreading inland from the northeast coast.	Cloudy spells with few light showers and rain mainly central & northern areas & coast.	Cloudy spells. Few light showers mainly over southern coastal areas.	Sunny with cloudy spells. Light showers mostly south.	Mostly sunny with isolated showers
Rainfall: 0.01-0.10 of-an-inch	Rainfall: 0.10-0.25 of-an-inch	Rainfall: 0.10-0.25 of-an-inch	Rainfall: 0.10-0.25 of-an-inch	Rainfall: 0.10- 0.25 of-an-inch	Rainfall: 0.10-0.25 of-an-inch	Rainfall: 0.01-0.10 of-an-inch

Weekly Outlook for the Cayo District

Expect a mix of sunshine and cloudy spells, with cool, night-time temperatures, ranging from lower 60s in the Mountain Pine Ridge to the mid and upper 60s in the valley areas of the upper Belize River Valley and the Belmopan area. The period with the highest probability of showers is Tuesday evening, Wednesday and early Thursday, occurring especially along the NE foothills of the elevated terrain. Otherwise, the weather will be fair with little rainfall this working week and over the coming weekend in most places.

OUTLOOK FOR THE MAIN DEVELOPMENT REGION (MDR) OF THE TROPICAL ATLANTIC BASIN



TROPICAL WEATHER OUTLOOK

NWS NATIONAL HURRICANE CENTER MIAMI FL
700 PM EST SUN NOV 18 2012

FOR THE NORTH ATLANTIC...CARIBBEAN SEA AND THE GULF OF MEXICO...

TROPICAL CYCLONE FORMATION IS NOT EXPECTED DURING THE NEXT 48 HOURS.

FORECASTER BROWN

End!